

A runner, or simple demo install to demonstrate FocalPoint Server's abilities and potential, is available for you to download via ftp.

1. Open this link in your web browser; <ftp://consol.de>

Please use the following user name and password:

user: appletest

password: appletestaaf

2. Under the directory "pub," you will find FocalPointRunner.app.zip. Download the zip file.

3. Double click to unzip.

4. Drag FocalPoint\_Runner.app to Applications, or drag and drop it to wherever you like e.g the desktop or dock. Double click the app to start FocalPoint Server. The application should be running all the time. If the machine is shut down, FocalPoint App should be restarted on login.

5. You then need to connect to the server in your web browser to see FocalPoint Server at <http://localhost:8080> or from another machine in the same network using the hostname/IP address of the machine where you installed it instead of localhost. Note: your IP address will be a ten-digit number. Your IP address on a mac is found here;  
System Preferences/Network

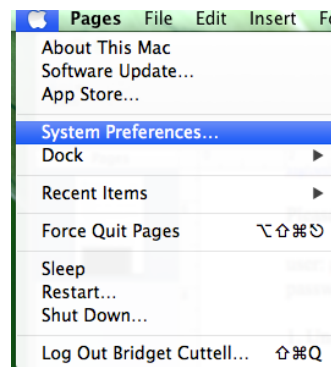


Fig. 1

Or on Windows XP for example;

- i. Select Start/My Network Places/Properties.
- ii. Double-click 'Local Area Connection' to find the IP address of your wired connection.
- iii. Double-click Wireless Network Connection to find the IP address of your wireless adapter.
- iv. Click Support and then Details. The window that pops up will display your computer's IP address.

6. The default account installed is username = admin  
password = admin

You need to enter through the 'Configure' button of FocalPoint Server and add additional users, and paste in your license code (see below) before you can go through the 'Start' button - the client end.



just create

configure

start

Fig. 2

7. You will need to contact us with the **request** (use the copy button to the left of the window) which contains details of your personal machine, for us to give you the **license** reply outlined in red. Just email the request to your first contact or [Kuppusamy.Ravindran@consol.de](mailto:Kuppusamy.Ravindran@consol.de)

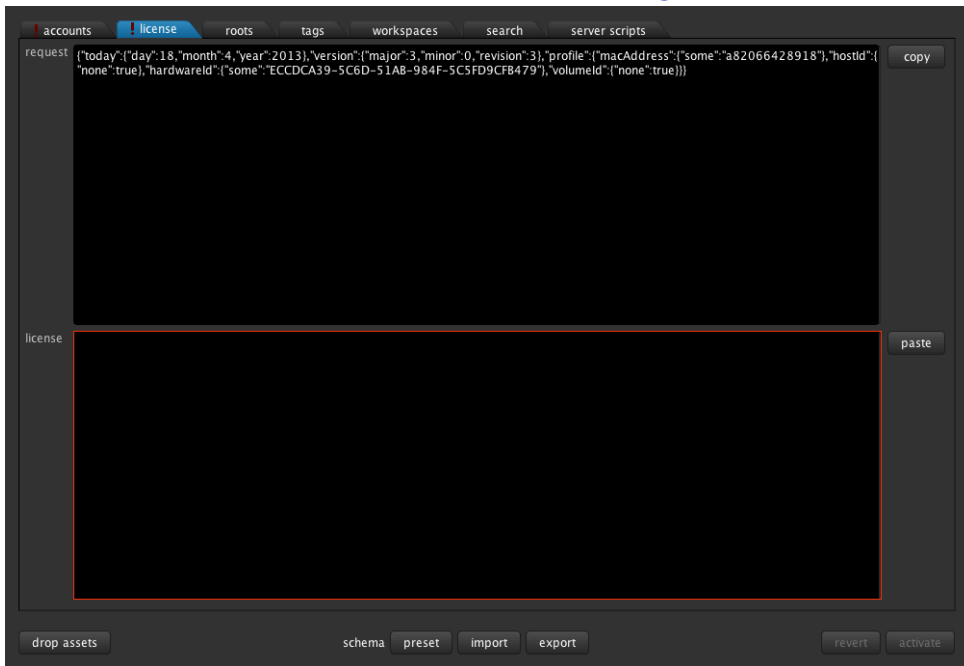


Fig. 3

8. When you receive the reply, paste it into the license box outlined in red.
9. Once you are licensed, you simply need to add another user under the admin/admin user in the first tab **accounts** (simply type in the new username and password) and you will have a fully working demo version. To then add example files and schemas, you may either;
  - i. Import your zip file if you have a zip file attached to your email. Save the file to your preferred folder/ the desktop. Double click it to unzip it. Then in the **roots** tab, (see Fig. 4) in the **Configure** back end (as shown in Fig. 3), select **Import** at the bottom of the interface. You can then select the unzipped file and click **Open** and then **activate** in the bottom right corner of FocalPoint Server.

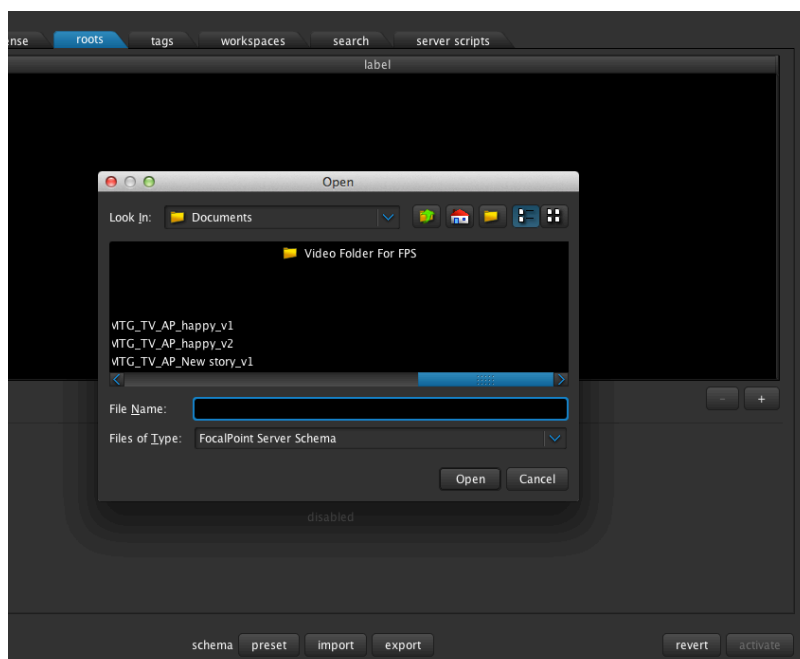


Fig. 4

ii. Or you may select the **preset** button in **roots**. (The second tab of the **Configure** back end as seen in Fig.3) Select one of these options (**nle** or **sports**) and click **activate**. This will open a schema within your demo version that you can experiment with.

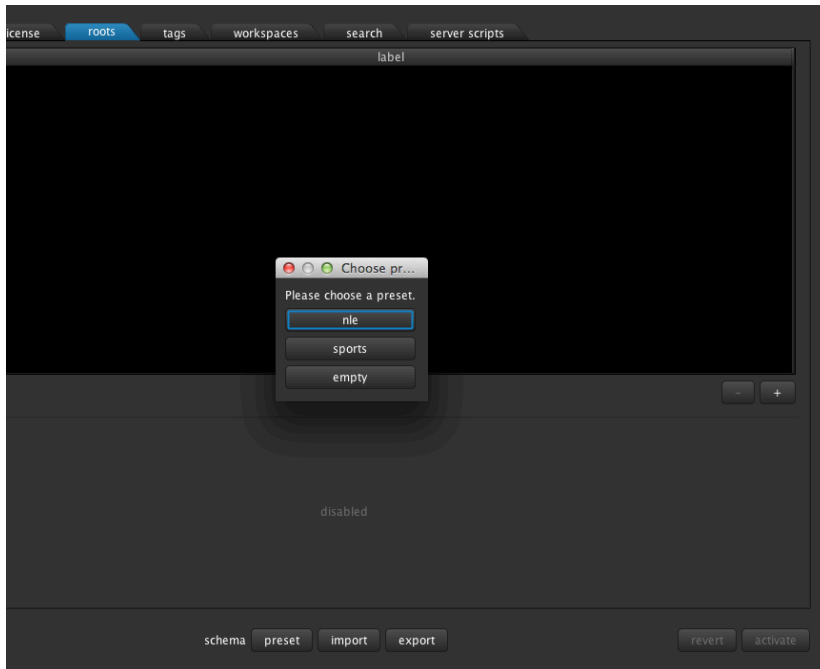


Fig. 5